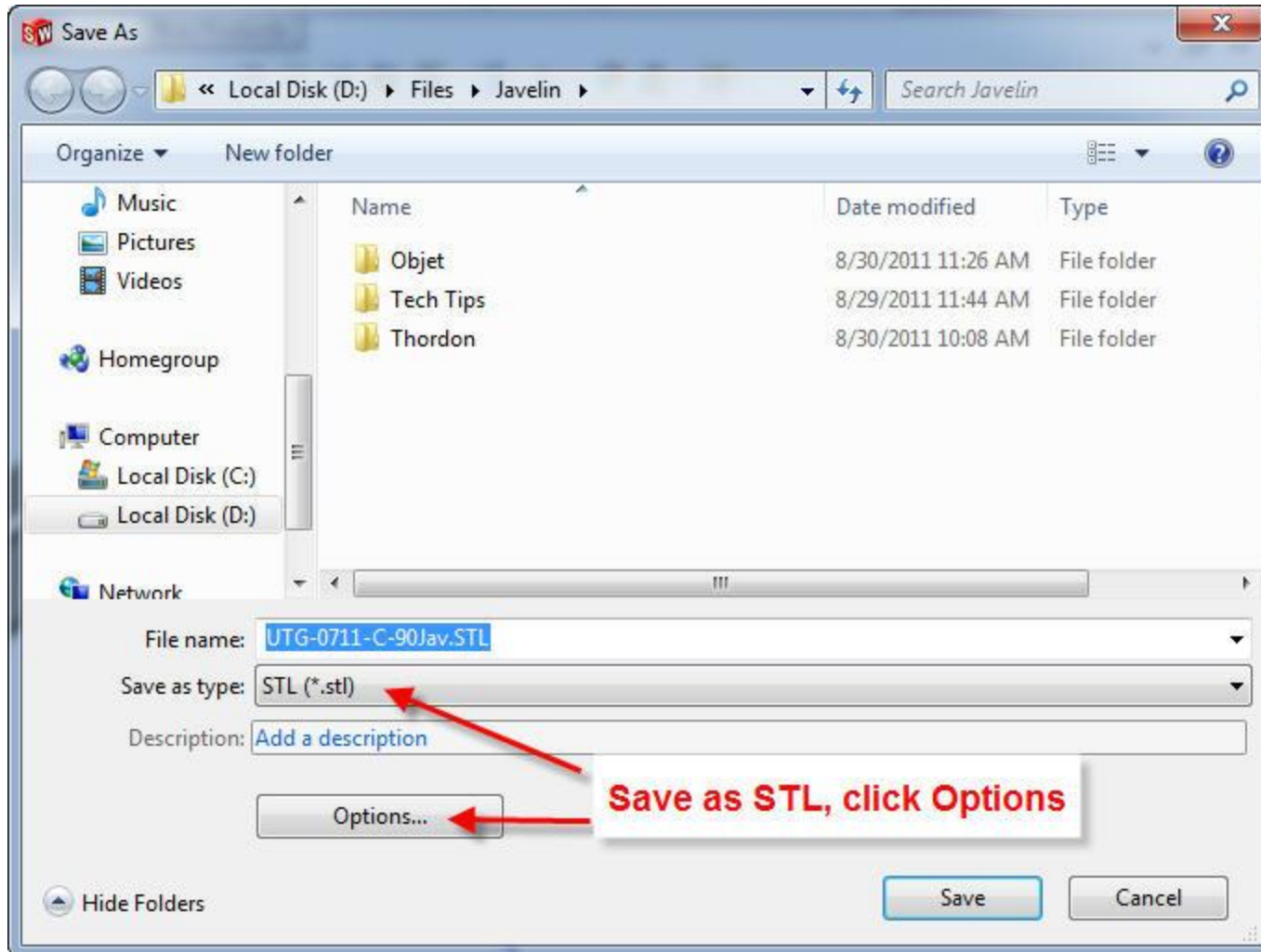


How to save a model file (part or assembly) so it can be made on the 3D Printer



File Format

- IGES 5.3
- STEP
- ACIS
- Parasolid
- VRML
- IFC
- STL
- VDA
- TIF/PSD/JPG
- EDRW/EPRT/EASM
- PDF

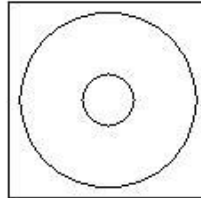
Output as
 Binary ASCII

Unit: Millimeters

Set units

Resolution

Coarse
 Fine
 Custom



Deviation

Tolerance: 0.1784917mm

Set Deviation as low as it will allow, usually 0.02mm. Allowed value changes with part complexity

Angle

Tolerance: 10.00000deg

Set Angle no larger than 5 deg. Smaller is better but file size increases dramatically as you go lower. 3 or 4 is a good trade-off

Show STL info before file saving

Preview

Triangles:

File size:

Disabled

- Do not translate STL output data to positive space
- Save all components of an assembly in a single file
- Check for interferences

Click OK when set, then save file

Reset...

Output coordinate system: -- default --

OK

Cancel

Help